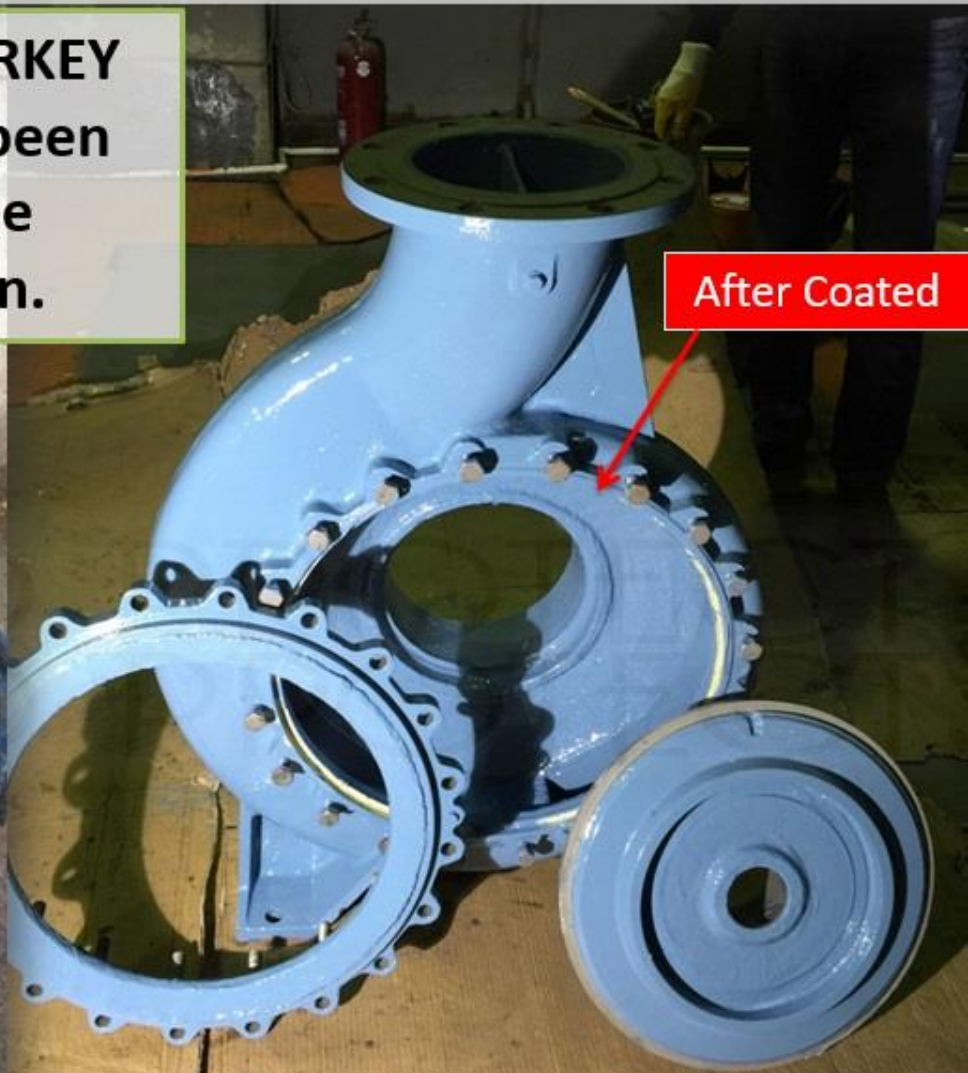




# ENVIRO PROTECT

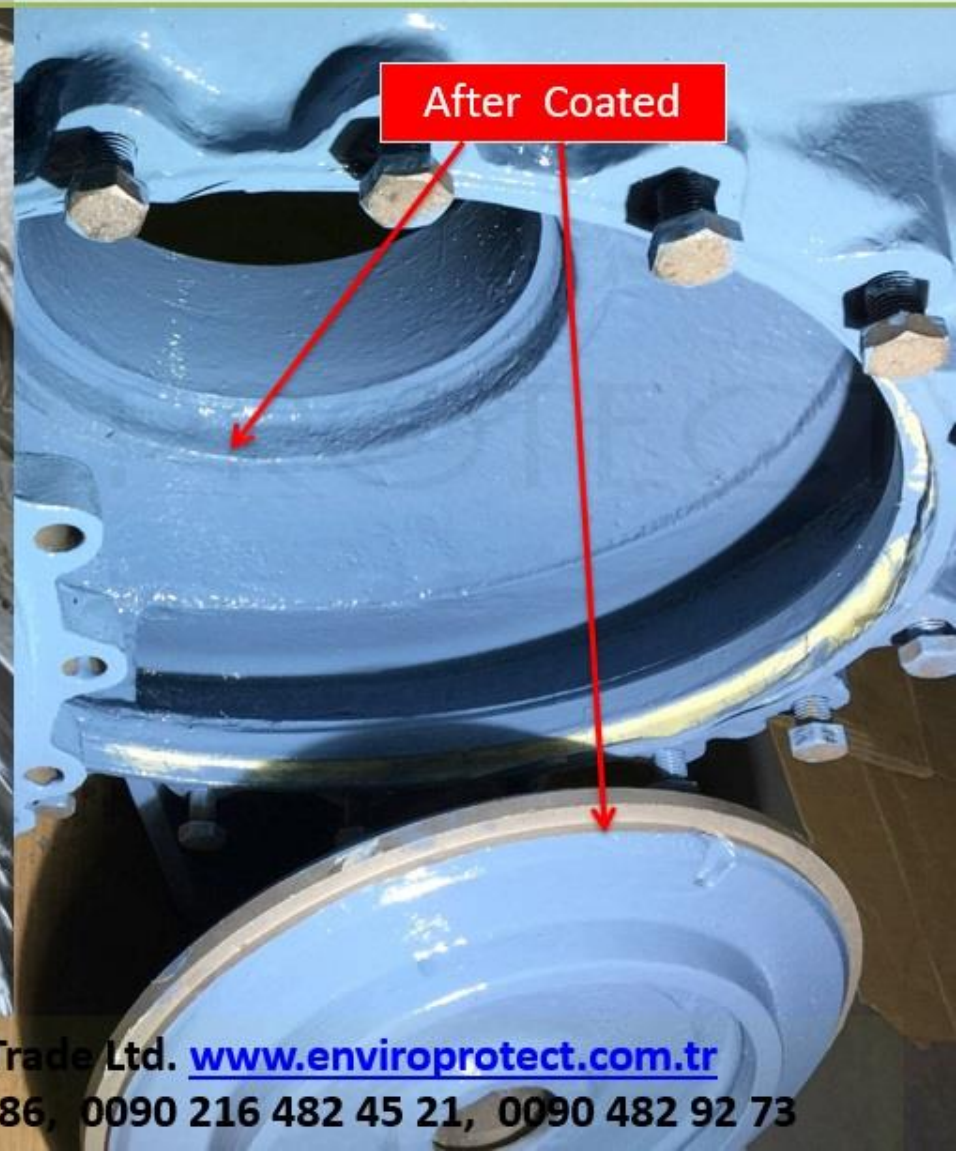
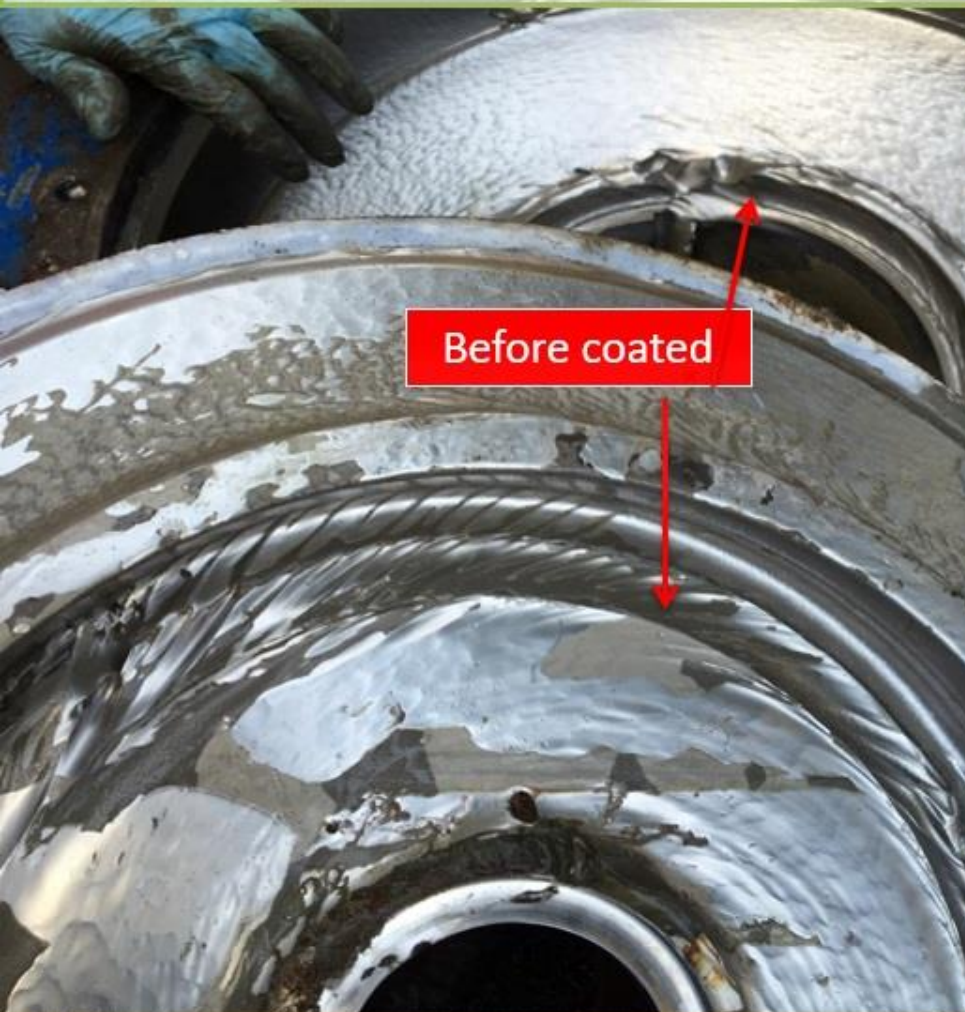
**COAL FIRED POWER PLANT in TURKEY**  
**:Ash water circulating pump has been repaired and coated against the abrasion, erosion and cavitation.**



Enviro Protect Engineering and Industrial Trade Ltd. [www.enviroprotect.com.tr](http://www.enviroprotect.com.tr)  
TEL: 0090 532 245 11 75, 0090 506 344 80 86, 0090 216 482 45 21, 0090 482 92 73



**Heavily damaged pump has been restored to their original profile by using cold ceramic composite**







# ENVIRO PROTECT

**Pump Cover has been restored to their original profile by using cold ceramic composite**



Enviro Protect Engineering and Industrial Trade Ltd. [www.enviroprotect.com.tr](http://www.enviroprotect.com.tr)  
TEL: 0090 532 245 11 75, 0090 506 344 80 86, 0090 216 482 45 21, 0090 482 92 73





# ENVIRO PROTECT

**Heavily damaged pump body has been restored to their original profile by using cold ceramic composite**



After blasting



Restored with cold filling



Coated for abrasion and fluid efficiency

Enviro Protect Engineering and Industrial Trade Ltd. [www.enviroprotect.com.tr](http://www.enviroprotect.com.tr)  
TEL: 0090 532 245 11 75, 0090 506 344 80 86, 0090 216 482 45 21, 0090 482 92 73



**Heavily damaged pump body has been restored to their original profile by using cold ceramic composite**

Abrasion and Cavitation damage

Damaged and worn areas has been built to original tolerances

Coated to resist extreme wear and cavitation



Enviro Protect Engineering and Industrial Trade Ltd. [www.enviroprotect.com.tr](http://www.enviroprotect.com.tr)

TEL: 0090 532 245 11 75, 0090 506 344 80 86, 0090 216 482 45 21, 0090 482 92 73





# ENVIRO PROTECT



Heavily damaged




Repaired for long term efficiency

Enviro Protect Engineering and Industrial Trade Ltd. [www.enviroprotect.com.tr](http://www.enviroprotect.com.tr)

TEL: 0090 532 245 11 75, 0090 506 344 80 86, 0090 216 482 45 21, 0090 482 92 73



Our composite coatings for erosion-corrosion-cavitation protection reduce further deterioration, increasing pump efficiency and reducing frequent maintenance costs.



Looks strong  
and smart





# ENVIRO PROTECT

## Enviro Protect Engineered Coatings

provided solutions to  
minimize the effects of  
abrasion,  
erosion-corrosion, and  
cavitation  
on **ash water** handling  
pump.



**STRONG – NICE and  
SMART**

Enviro Protect Engineering and Industrial Trade Ltd. [www.enviroprotect.com.tr](http://www.enviroprotect.com.tr)

TEL: 0090 532 245 11 75, 0090 506 344 80 86, 0090 216 482 45 21, 0090 482 92 73